

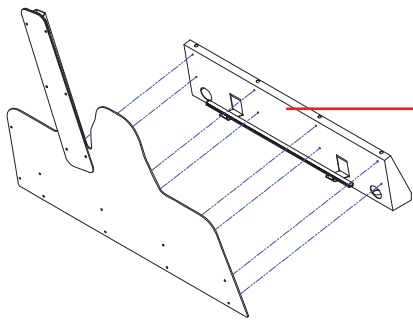
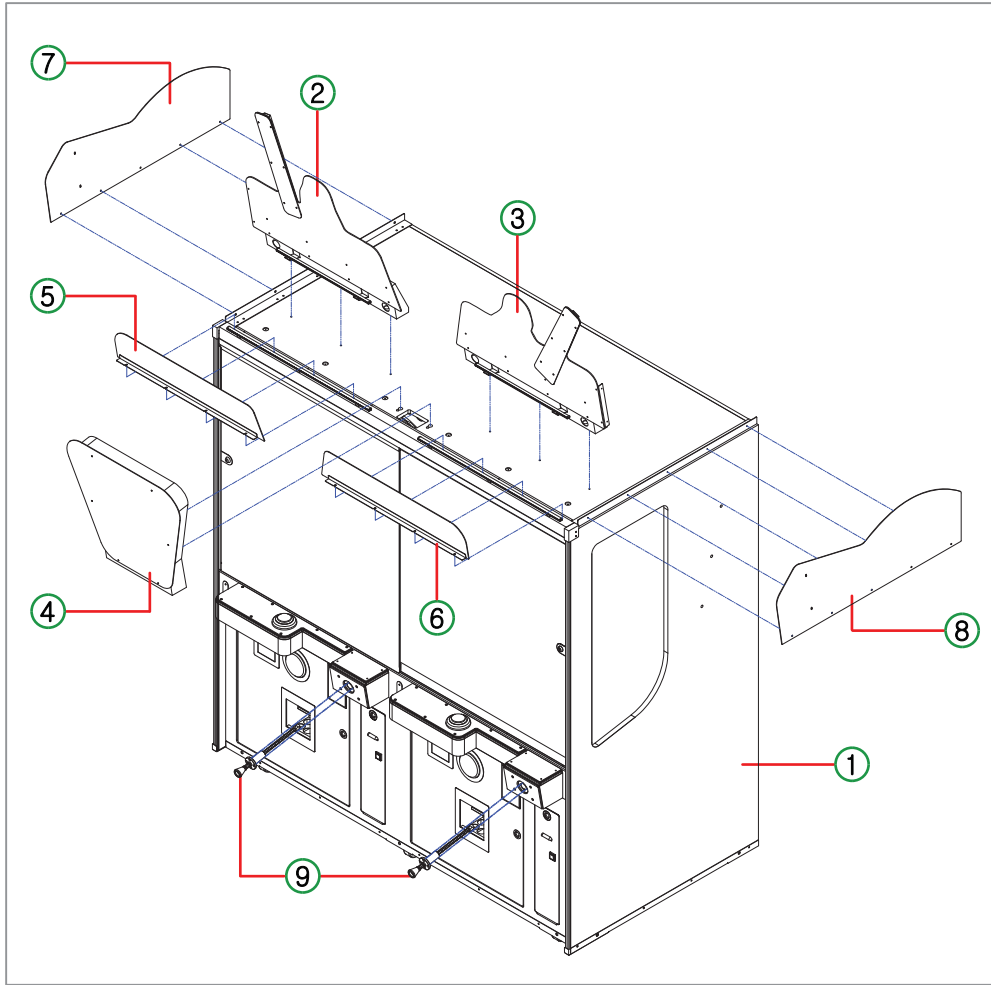
HOW TO INSTALL



[QR CODE]

1. HOW TO INSTALL_BILLBOARD

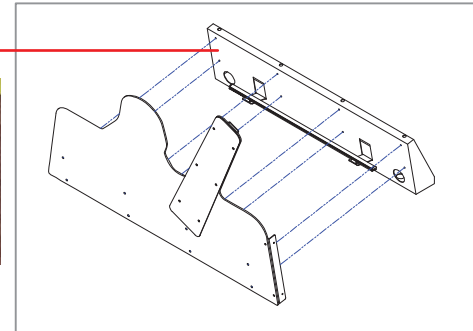
* Please refer to the video through QR code Please proceed with the wiring connection.



* 1P



* 2P



NO	PROCESS	ITEM	Q'TY	BOLT	SPEC	Q'TY
1		MAIN CABINET	1			
2	ASSEMBLE	BILLBOARD REAR DECO MAIN-L + Wiring connection	1	SEMS NI	M6*20L	3
3	ASSEMBLE	BILLBOARD REAR DECO MAIN-R + Wiring connection	1	SEMS NI	M6*20L	3
4	ASSEMBLE	BILLBOARD SB FND BOX ASS'Y + Wiring connection	1	SEMS NI	M6*30L	2
5	ASSEMBLE	BILLBOARD FRONT DECO-L	1	TH NI	M4*8L	4
6	ASSEMBLE	BILLBOARD FRONT DECO-R	1	TH NI	M4*8L	4
7	ASSEMBLE	BILLBOARD SIDE DECO	1	TH NI	M4*8L	7
8	ASSEMBLE	BILLBOARD SIDE DECO	1	TH NI	M4*8L	7
9	ASSEMBLE	SHOOTER PART	2	WRENCH	M5*12L	8

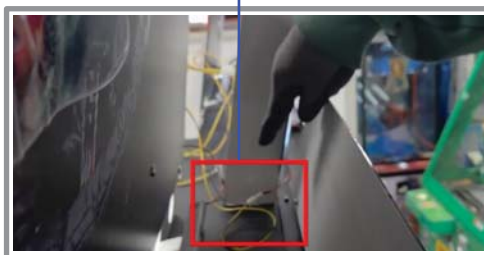
10 * WIRING CONNECTION

- 1P LED (460mm) connector + LIGHTSABER LIGHTS connection

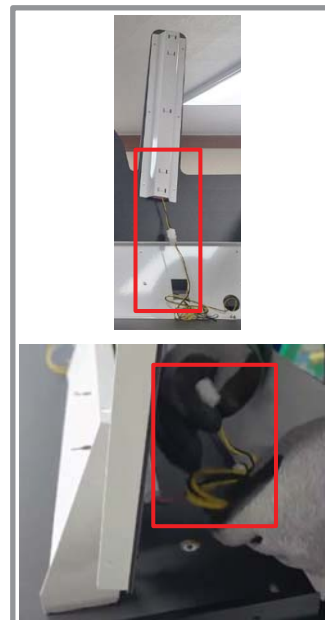
- 1 - BILLBOARD SB FND BOX ASS'Y connection [10PIN]



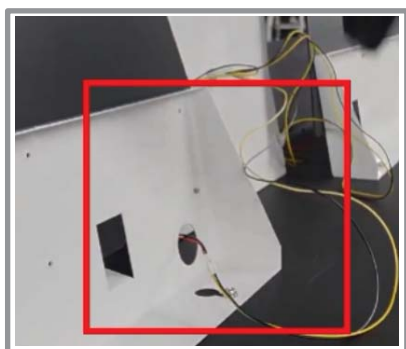
- 2 - 1P Front LED connection (LED BAR_710mm)



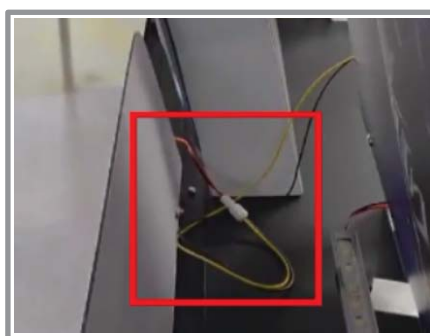
3



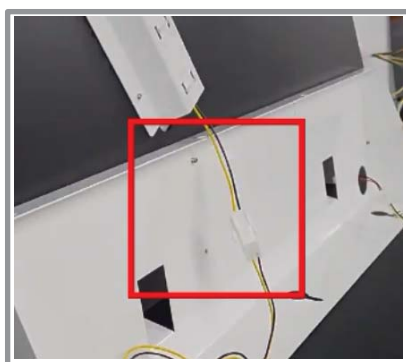
- 4 - 2P Rear LED connection (LED BAR_460mm)



- 5 - 2P Front LED connection (LED BAR_710mm)



- 6 - 2P LED (460mm) connector + LIGHTSABER LIGHTS connection



*** CAUTION**

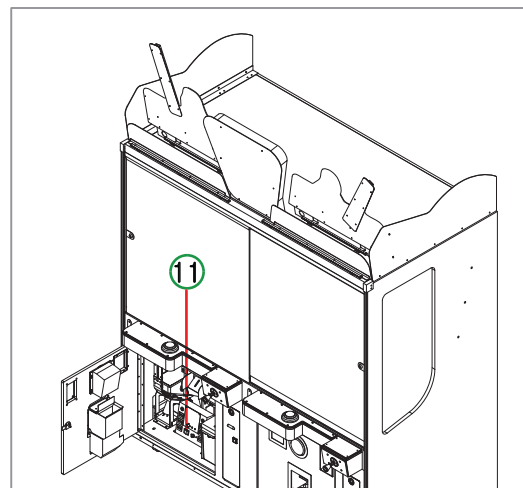


- Be careful with BILLBOARD FRONT DECO when connecting wiring.

7



- Wiring connection completed



NO	PROCESS	EXPLANATION
10	CONNECTION	BILLBOARD CONNECTOR
11	POWER ON	The voltage of this product is (120V or 230V)