

*** ANDAMIRO WARRANTS the parts from date of shipment as follows.**

- 6 Month Limited Warranty : Electronic Boards

- 3 Month Limited Warranty : Solenoid Ass'y

CONTENTS

1. ERROR CODEP01
2. TEST MODEP02
3. TROUBLESHOOTINGP04


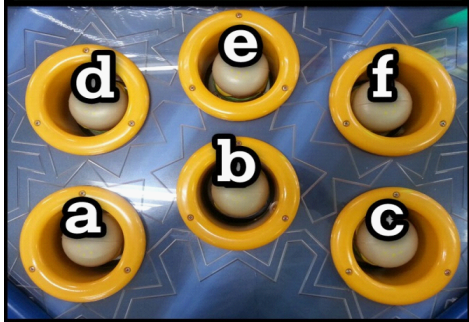
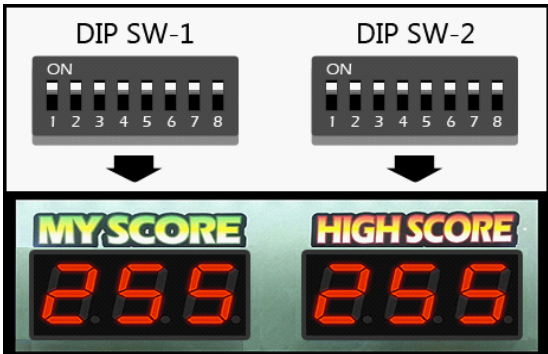
[ERROR CODE]


		Problem Situation	Cause	Solution
1	Hamburger Vibration Sensor Problems	score does not appear	1) Hamburger vibration sensor disconnection	Replacement Sensor
			2) The sensing part was closed so point was detected	Turn the sensor to 180 °
2	Speaker or IO Panel Problems	sound does not operate	1) Speaker defected if speaker test does not sound	Replacement Speaker
			2) IO Panel defected if speaker test there is sound	Repair IO Panel
3	Broken Parts	Broken Character of Head, handle and Hammer	Due to continuous movement and obsolescence	Replace Parts (Consumables)
4	Coil Problems	Case of the coil was disconnection	Due to continuous movement and obsolescence	Replace Parts (Consumables)

[TEST MODE]

To get into TEST mode, turn on th machine while pushing RESET button for 4~5 seconds.

Whenever RESET button is pushed in the test mode,
the test item is automatically changed. 1st SOUND, 2nd FND, 3rd Hamburger(Solenoid) Ass'y.

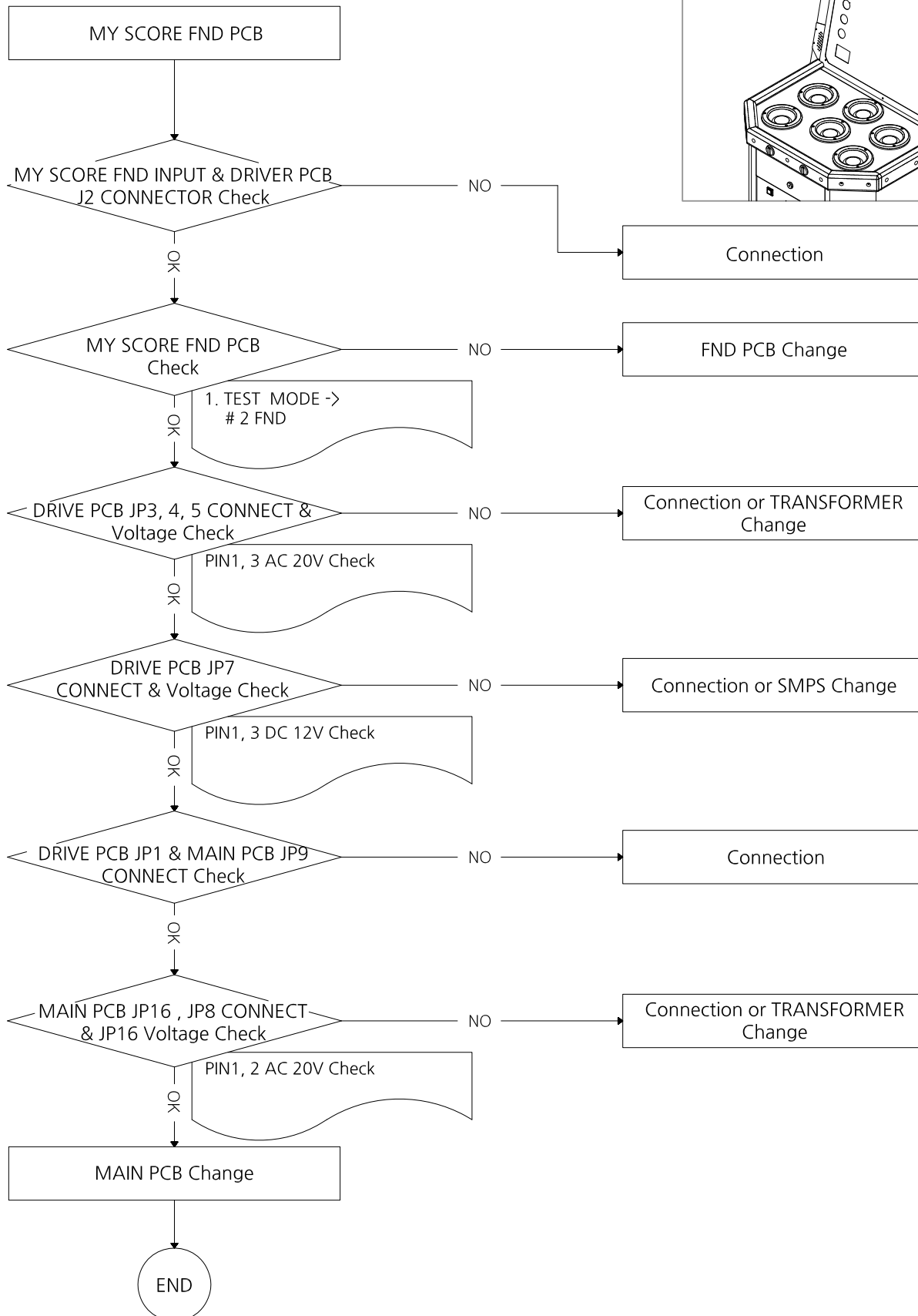
Mode	Description
# 1	Sound check : Sound operation automatically check
# 2	FND check : FND(i.e. Flexible Numeric Displays) check for game point, high score, play time and credit
# 3	<p>Solenoid and sensor check - Check that hamburgers come up automatically and operate properly. In the test of Hamburger(Solenoid) Ass'y,</p> <p>1) sensor test If each FND does not show up number when you hit each Hamburger(Solenoid) Ass'y, the sensor is in trouble. In that case replace with new sensor.</p> <p>2) Auto test If each FND shows any number when the solenoid ass'y is automatically up and down, the sensor is so sensitive. In that case replace with new sensor.</p> <p>FND DISPLAY => </p> <p>Hamburger (Solenoid) Ass'y => </p>
# 4	<p>Dip SW check : Dip switch normal operation test. When the dip switch 1 is turned 'ON', the MY SCORE FND If the number '255' is displayed, it is normal. If 255 is not displayed, DIP switch is defective. (Dipswitch 2 is displayed in the HIGH SCORE FND)</p> <p></p>

# 5	<p>Ticket Dispenser Test: Test for normal operation of the ticket ejector.</p> <p>Each time the ticket eject button is pressed, three sheets are ejected.</p> <p>The total number of tickets issued is displayed in the TICKET (S) window.</p> 
-----	---

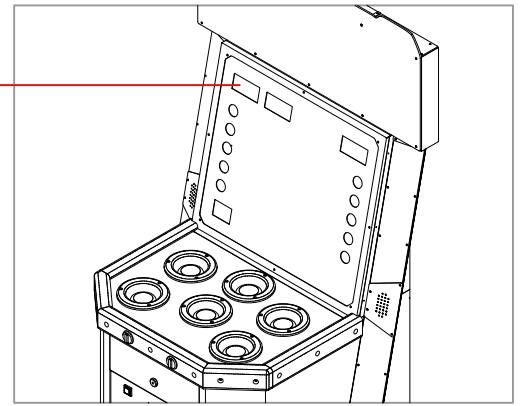
[TROUBLESHOOTING]

*Common: Check the input voltage, check wiring

1. MY SCORE FND ERROR



SCORE FND



Connection

FND PCB Change

Connection or TRANSFORMER Change

Connection or SMPS Change

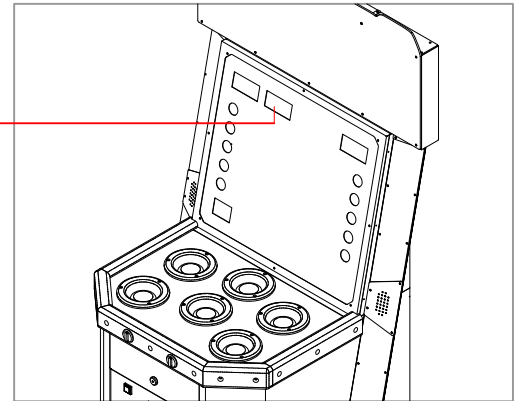
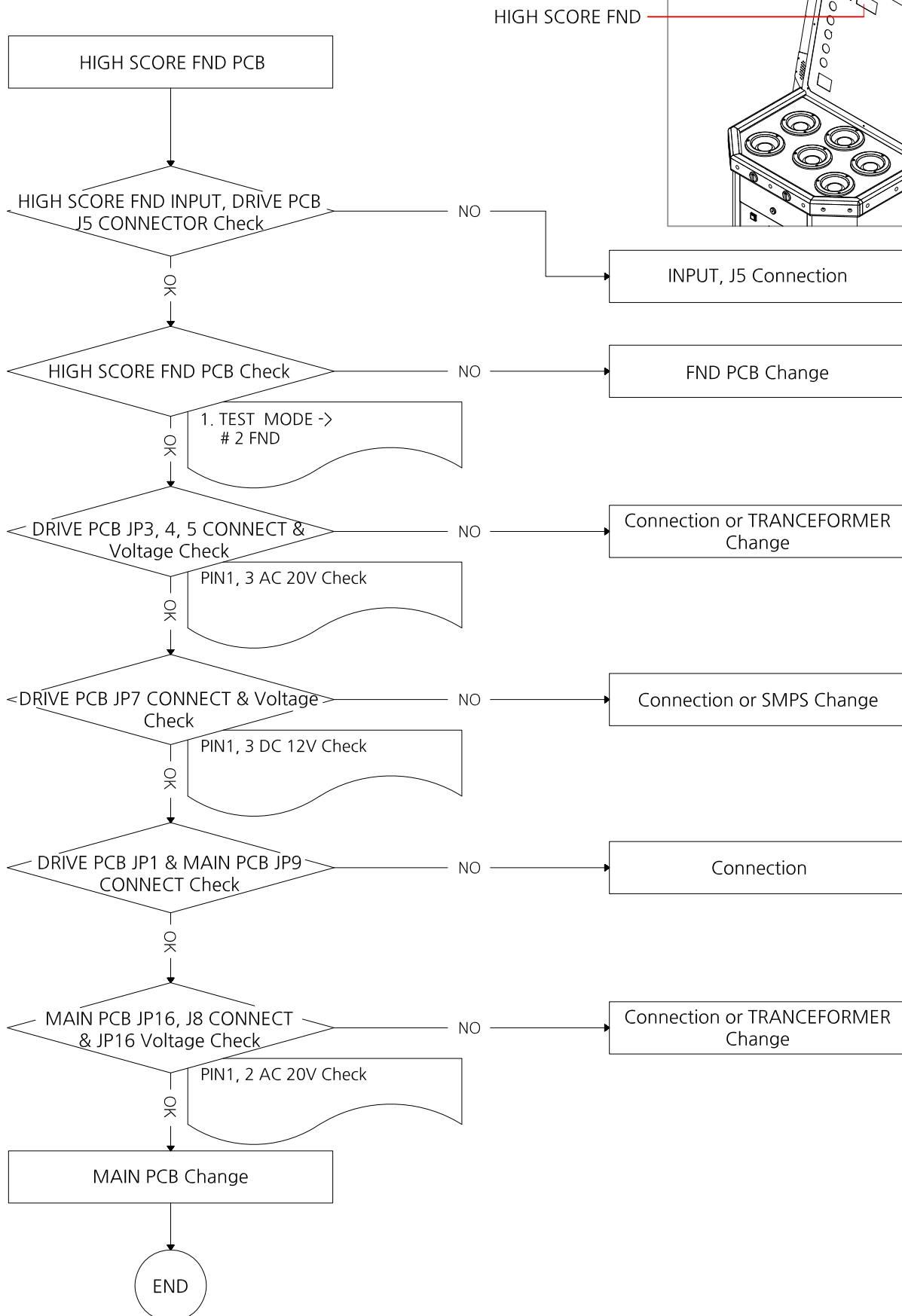
Connection

Connection or TRANSFORMER Change

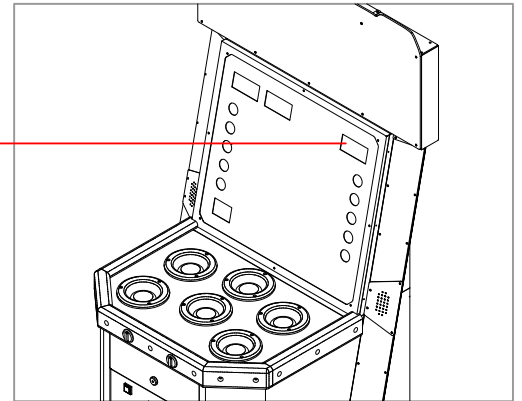
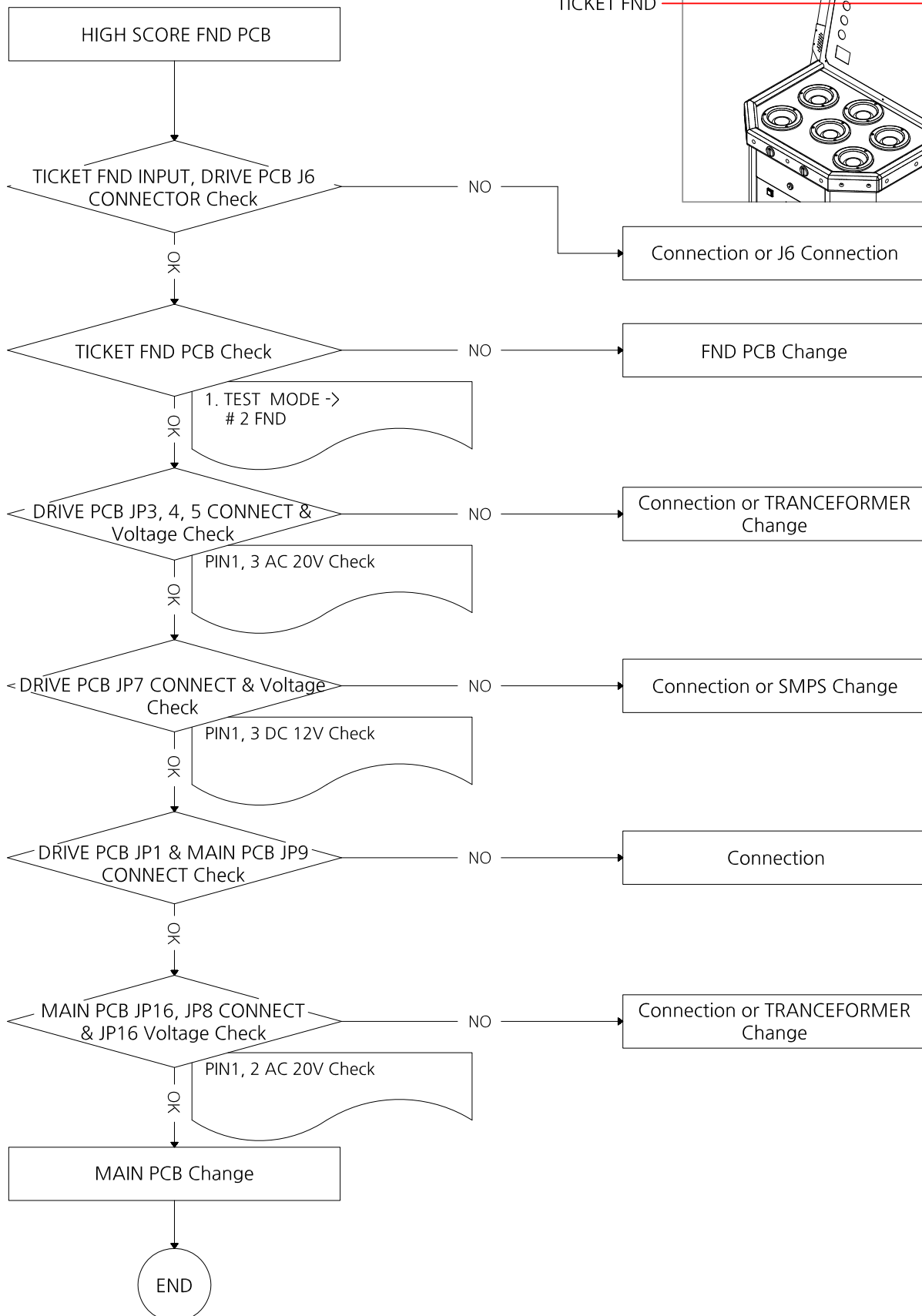
MAIN PCB Change

END

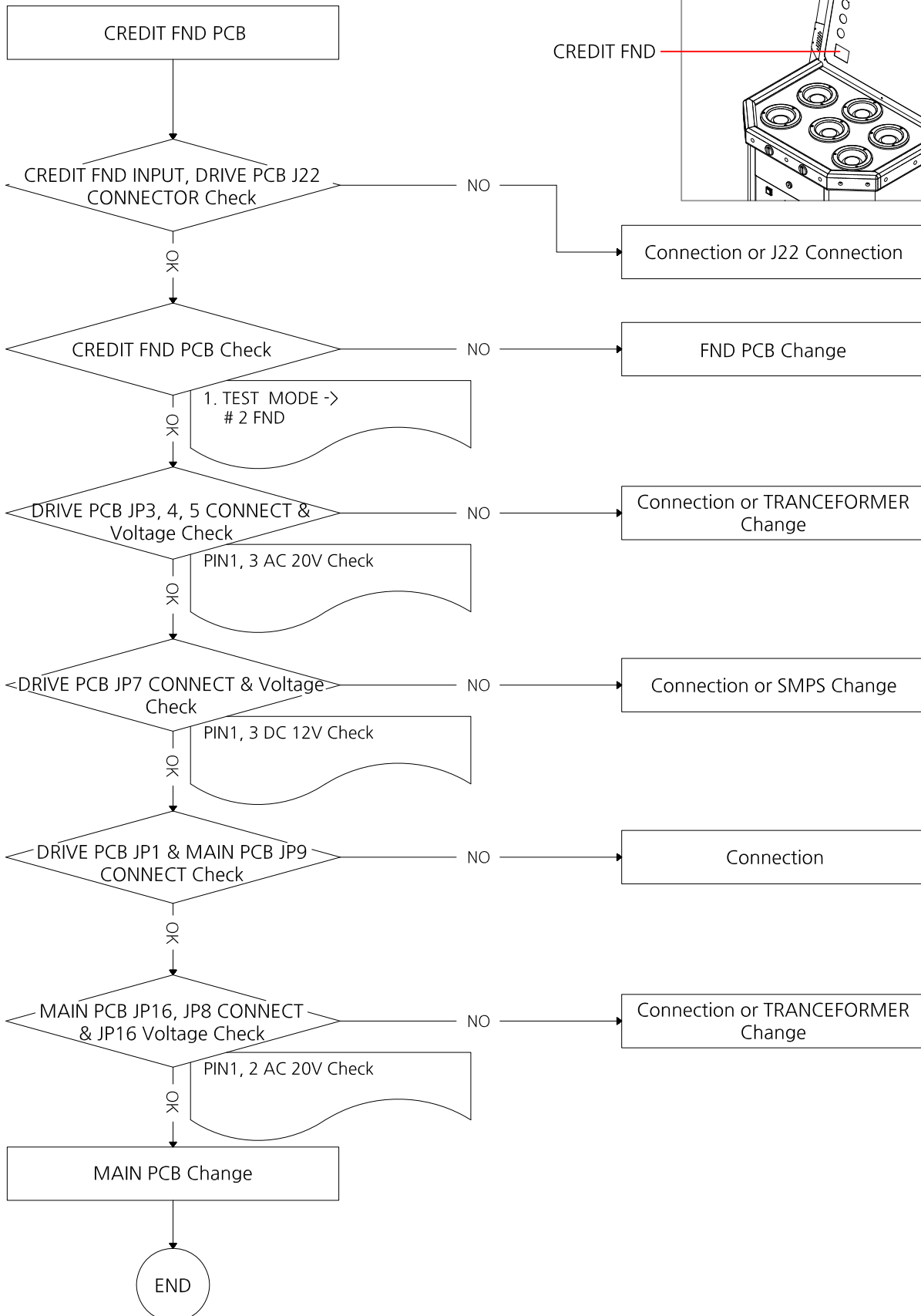
2. HIGH SCORE FND PCB ERROR



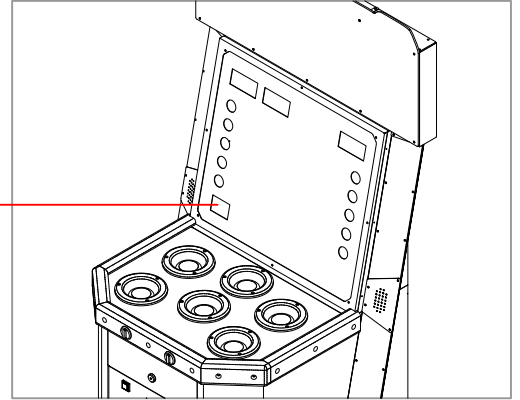
3. TICKET FND PCB ERROR



4. CREDIT FND PCB ERROR



CREDIT FND



Connection or J22 Connection

FND PCB Change

Connection or TRANSFORMER
Change

Connection or SMPS Change

Connection

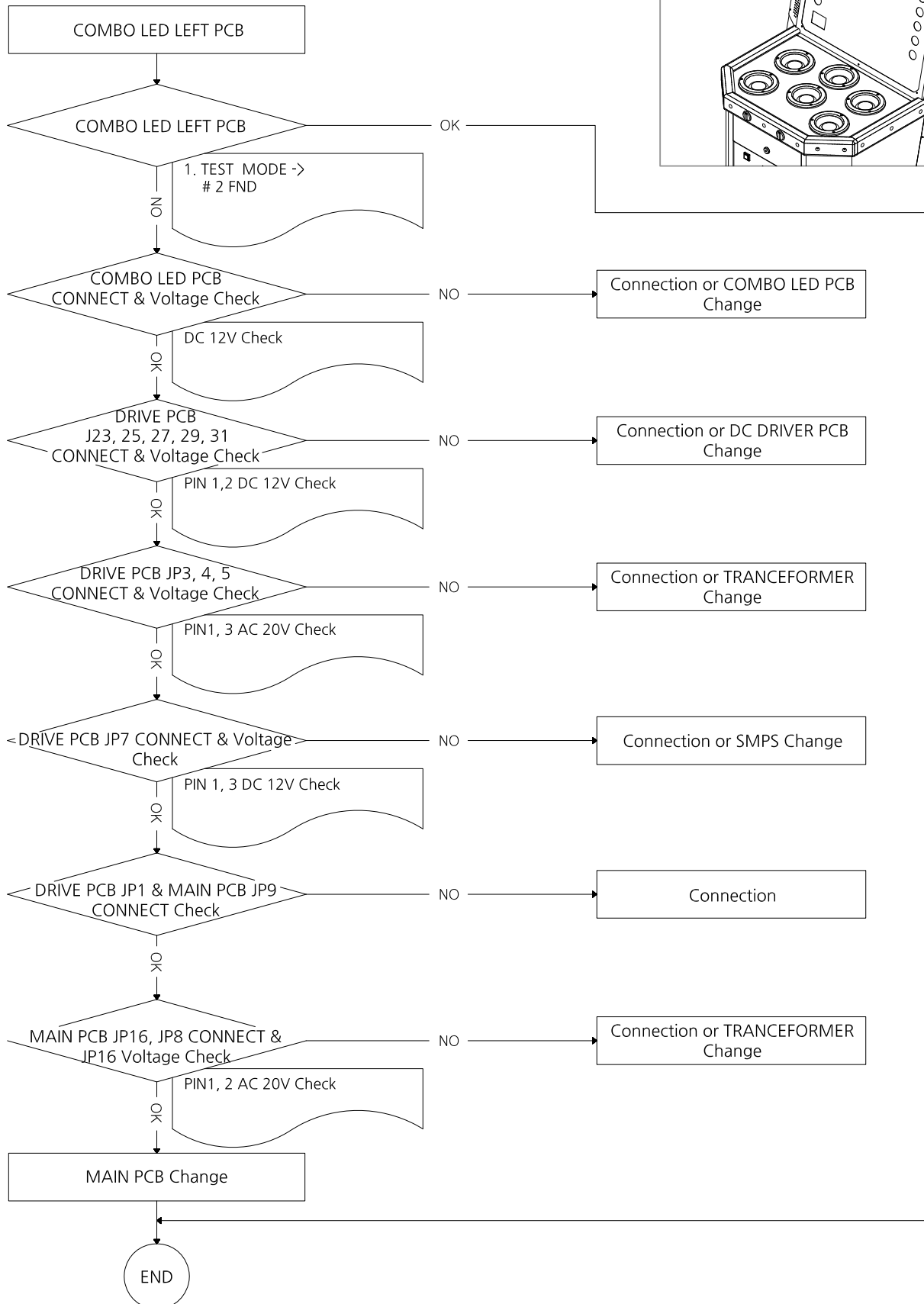
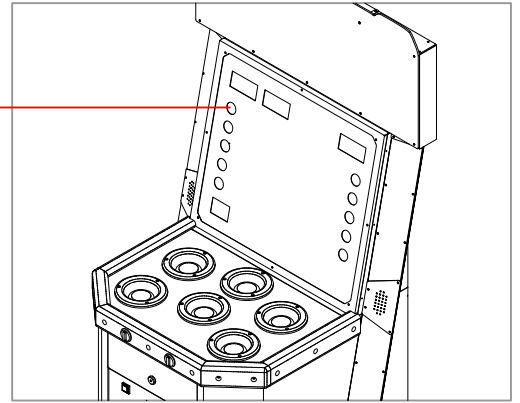
Connection or TRANSFORMER
Change

MAIN PCB Change

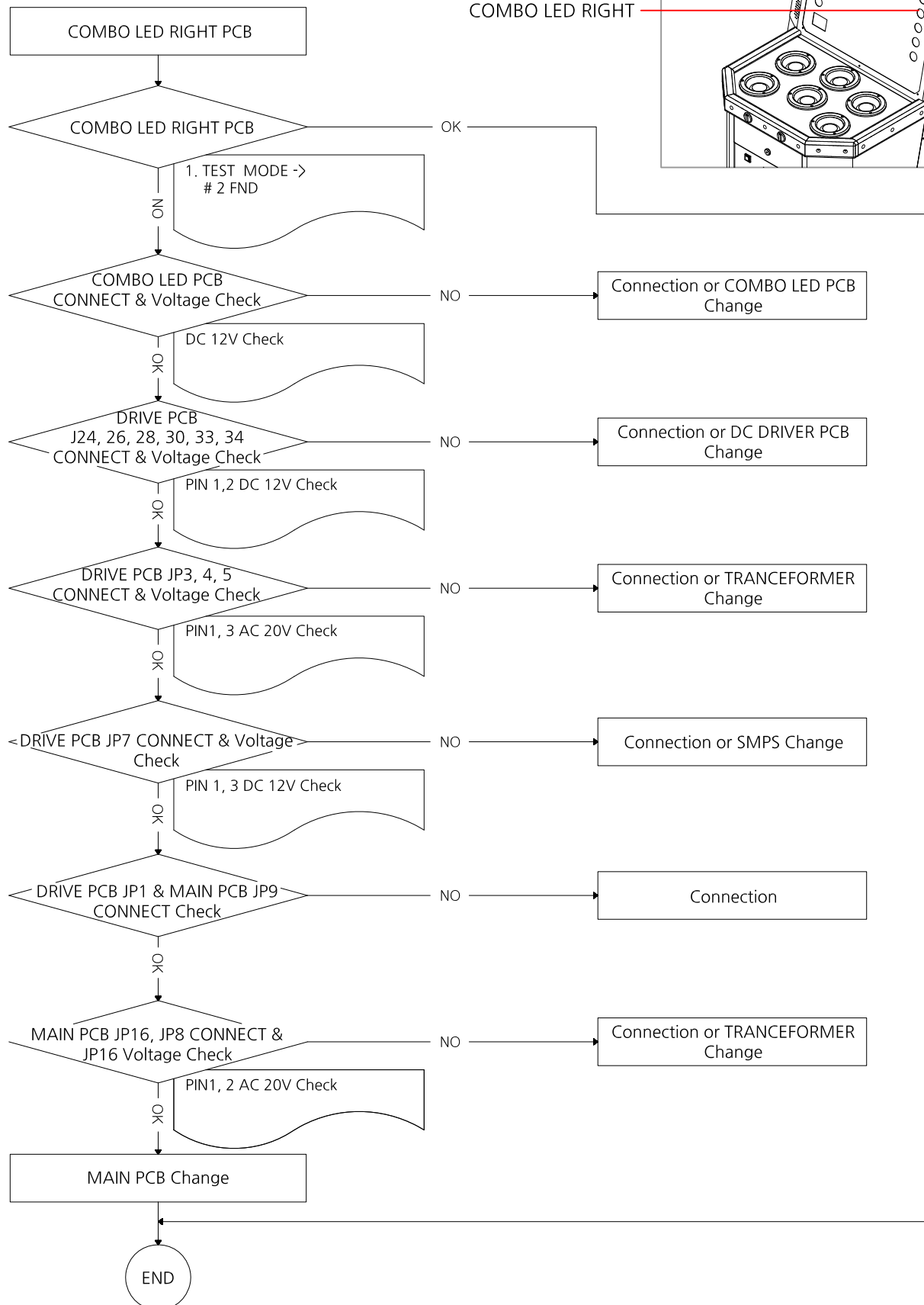
END

5. COMBO LED LEFT ERROR

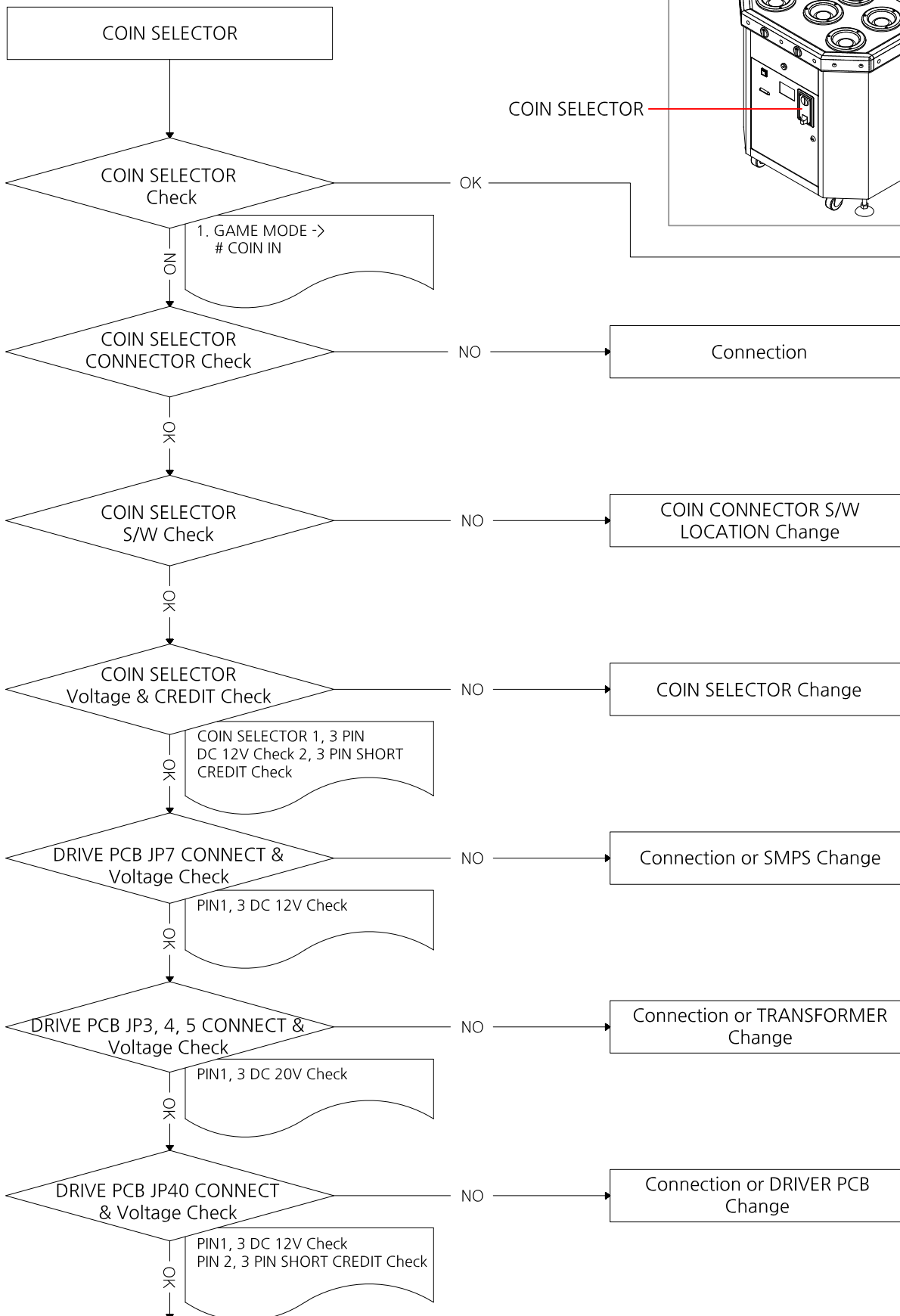
COMBO LED LEFT

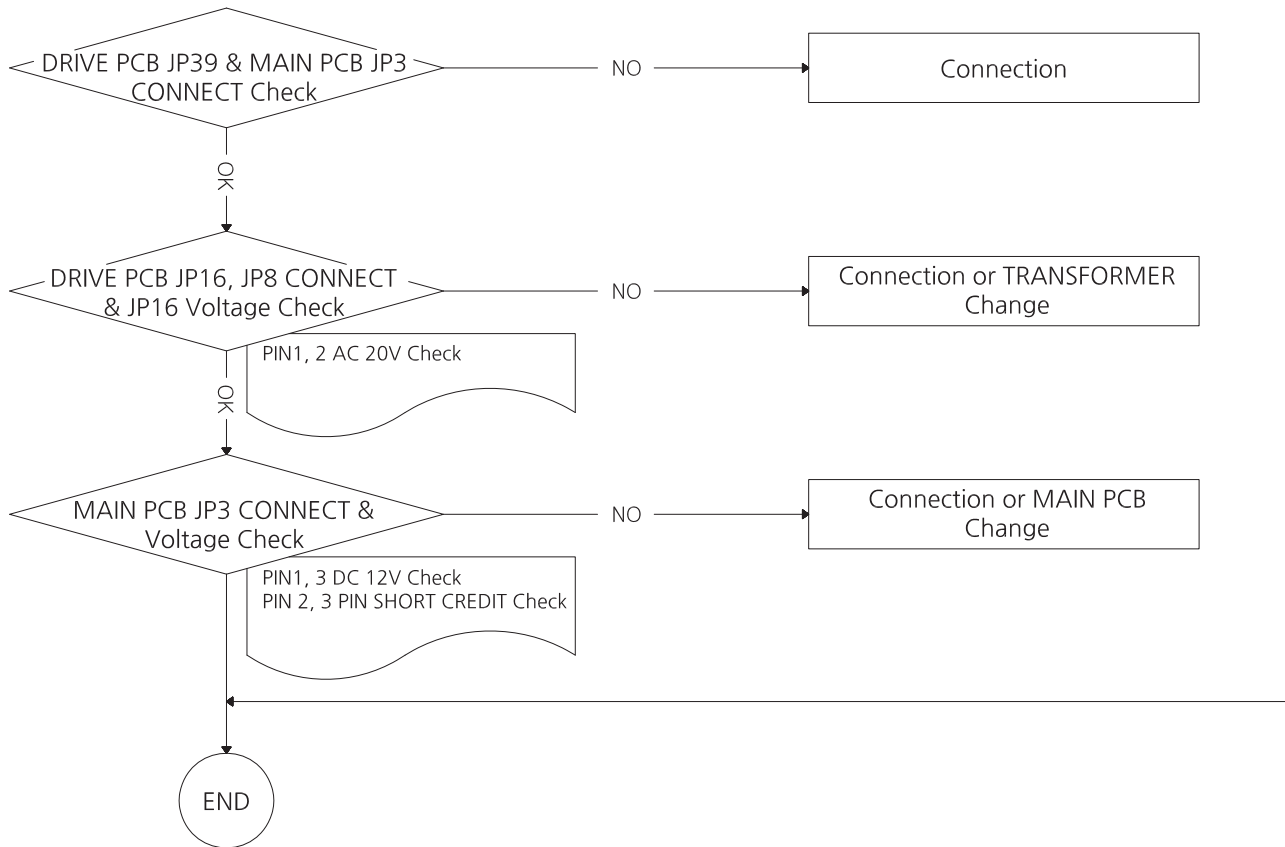


6. COMBO LED RIGHT ERROR

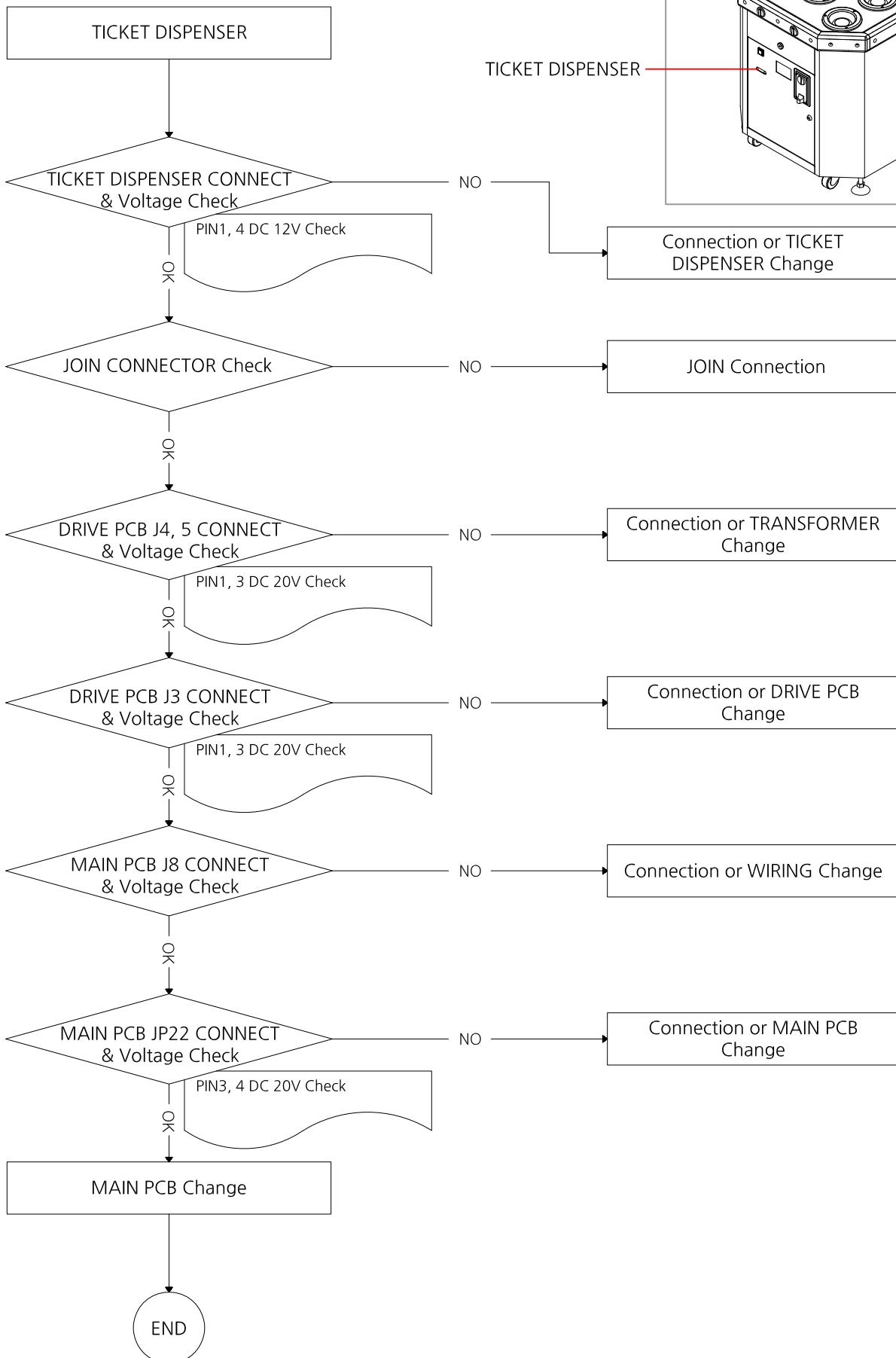


7. COIN SELECTOR ERROR

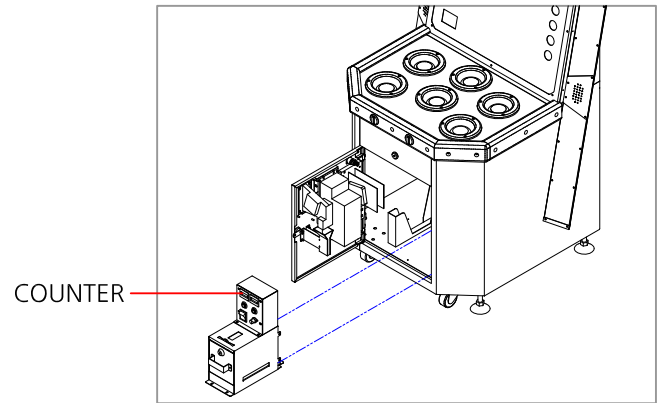
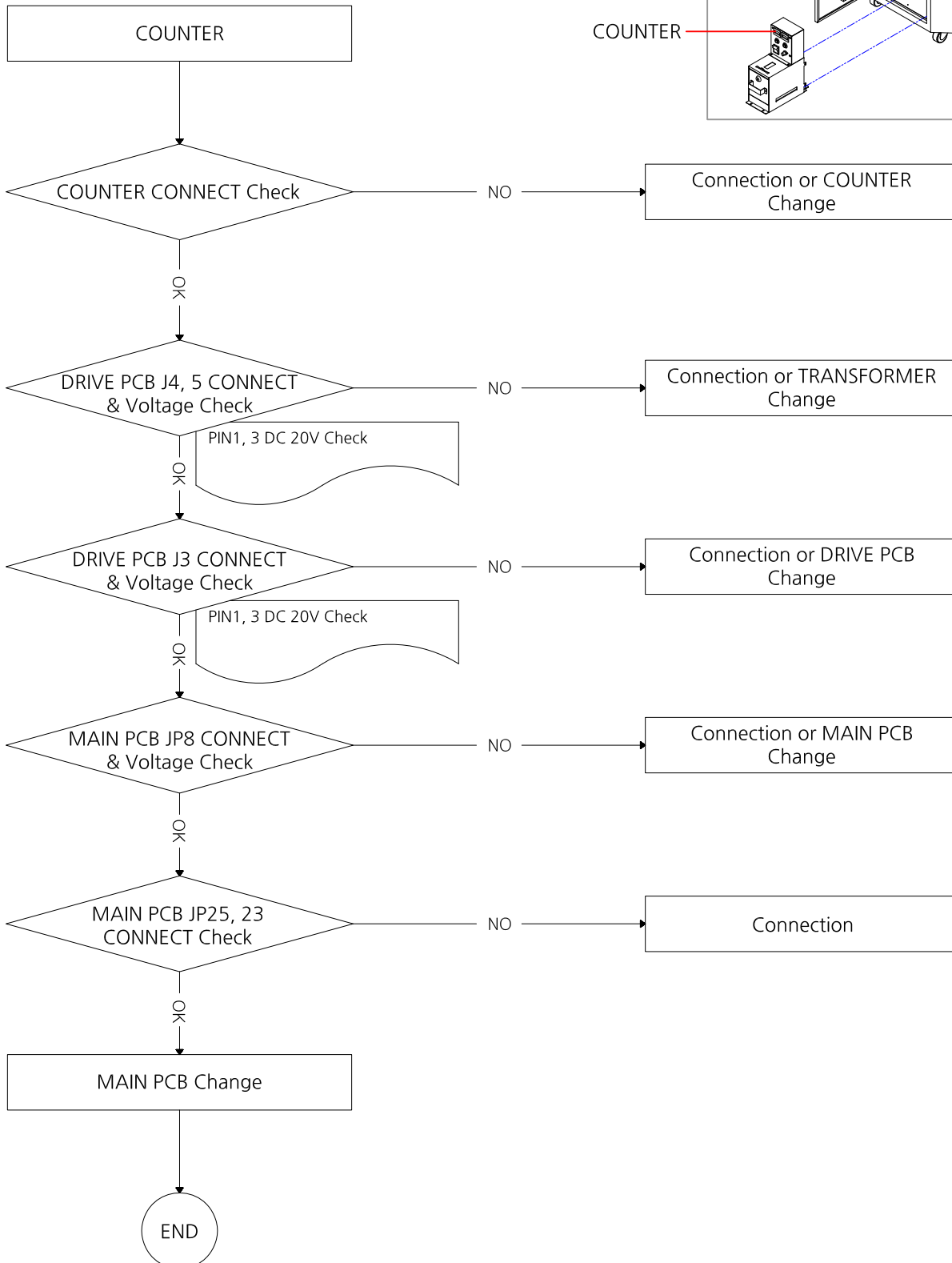




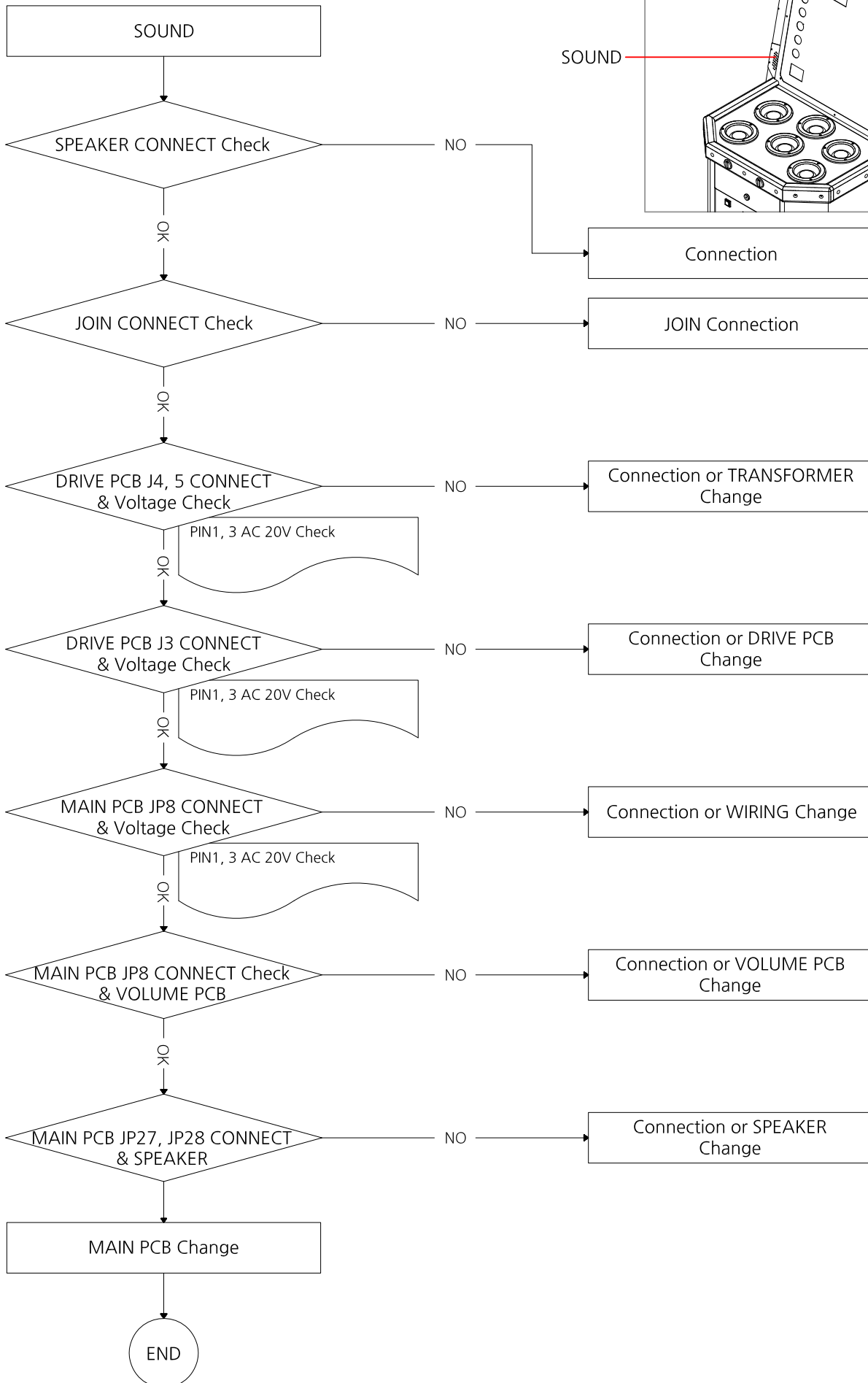
8. TICKET DISPENSER ERROR



9. COUNTER ERROR



10. SOUND ERROR



11. HAMBURGER SOLENOID ERROR

HAMBURGER SOLENOID

